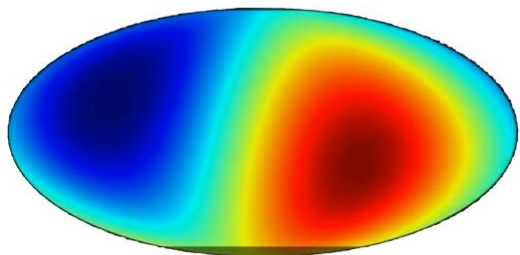
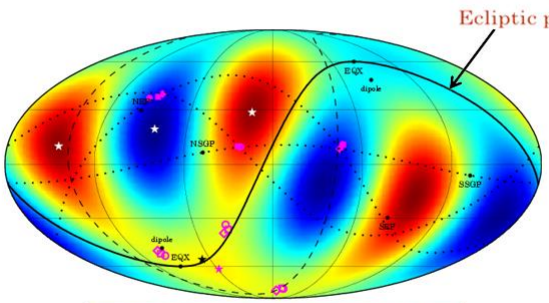


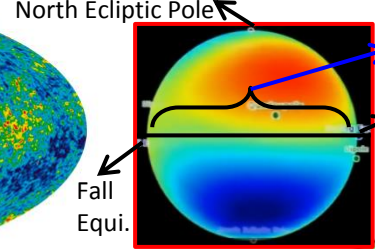
**Image of  
Cosmic Microwave Background (CMB)  
radiation on WMAP data**



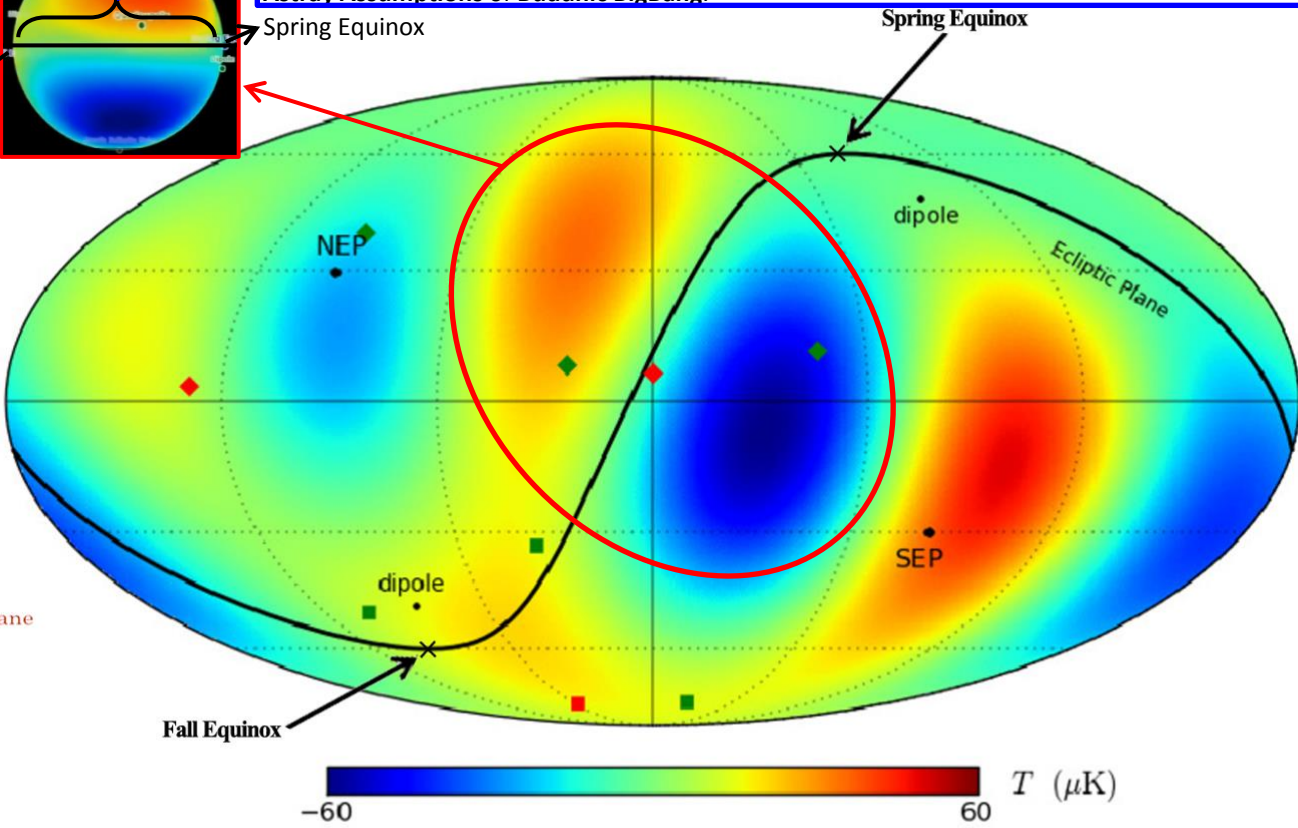
**Bipole Anisotropy (Alignment  $L=1$ )**



**Octopole Anisotropy (Alignment  $L=3$ )**



**“Axis Of Evil”** that Spans the Entire universe all along the CMB radiation. Perfect Alignment of “Axis Of Evil”=(The S Shape Belt around Quadrupole Anis.) with “Ecliptic Plane” is **Contrary** with Astray Assumptions of Buddhist BigBang.



**Quadrupole Anisotropy of the WMAP sky map in galactic coordinates  
(Alignment  $L=2$ )**